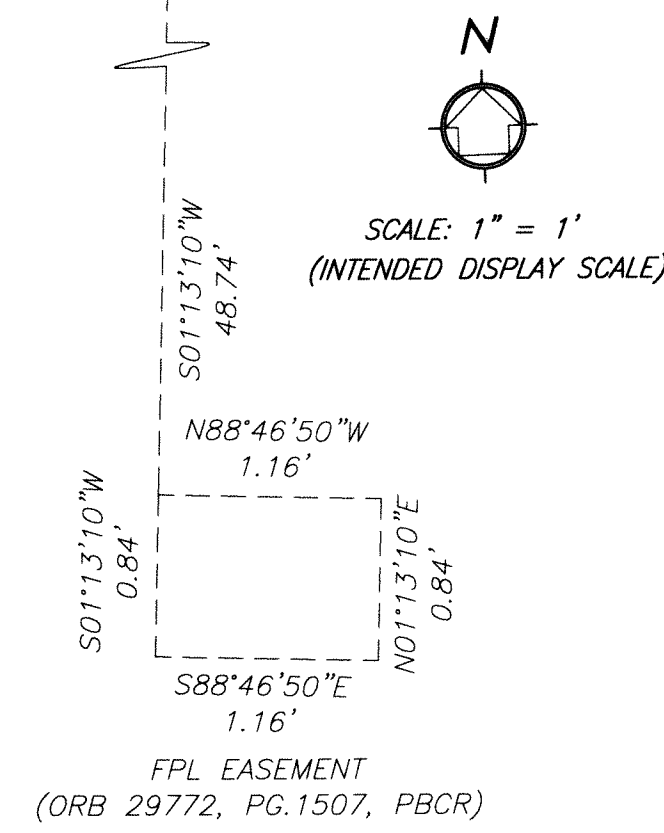


BRIGHTLINE PARKING GARAGE, WPB

BEING A REPLAT OF A PORTION OF BLOCK 23 ACCORDING TO PLAT BOOK 1, PAGE 2,
LYING AND SITUATE IN SECTION 21, TOWNSHIP 43 SOUTH, RANGE 43 EAST,
THE CITY OF WEST PALM BEACH, PALM BEACH COUNTY, FLORIDA.

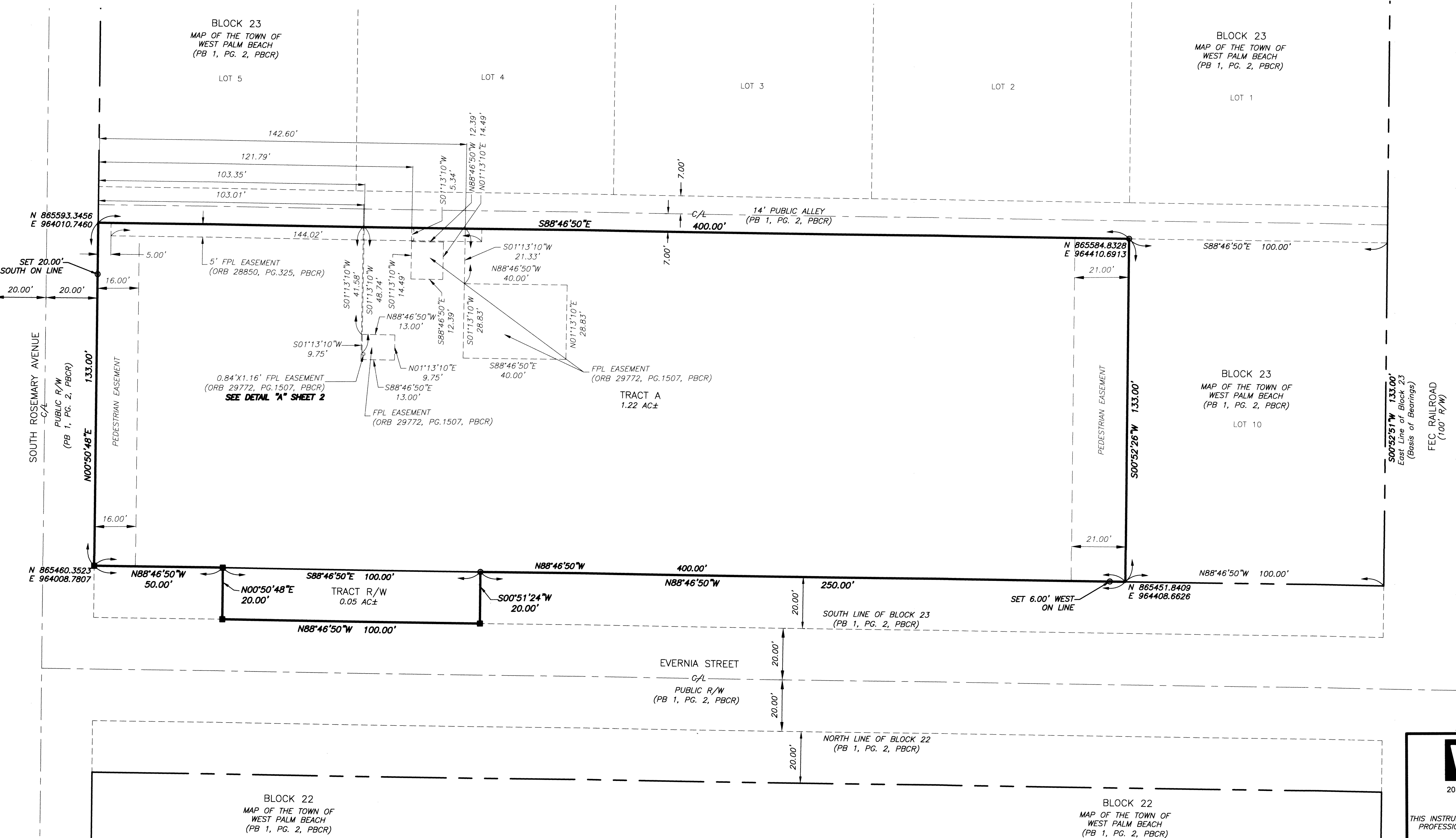
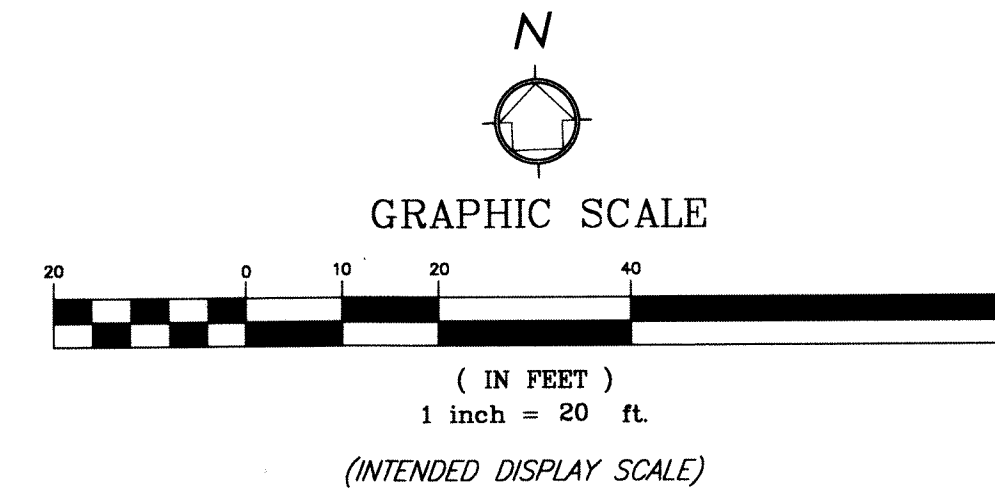
53



DETAIL "A" FROM SHEET 2

LEGEND:

- AC = ACRES
- C/L = CENTER LINE
- FND. = FOUND
- FPL = FLORIDA POWER & LIGHT
- LB = LICENSED BUSINESS
- ORB = OFFICIAL RECORDS BOOK
- PG. = PAGE
- PBCR = PALM BEACH COUNTY RECORDS
- PB = PLAT BOOK
- PRM = PERMANENT REFERENCE MONUMENT
- R/W = RIGHT-OF-WAY
- = SET 4"x4" CONCRETE (PRM) & ALUMINUM DISC STAMPED "LB 7055 PRM" UNLESS OTHERWISE NOTED
- = SET NAIL & BRASS DISC STAMPED "LB 7055 PRM" UNLESS OTHERWISE NOTED



2035 Vista Parkway, West Palm Beach, FL 33411
Phone No. 866.909.2220 www.wginc.com
Cert No. 6091 - LB No. 7055

THIS INSTRUMENT WAS PREPARED BY ERIC R. MATTHEWS, P.S.M.
PROFESSIONAL SURVEYOR AND MAPPER, LICENSE NO. 6717
FOR THE FIRM: WANTMAN GROUP, INC.